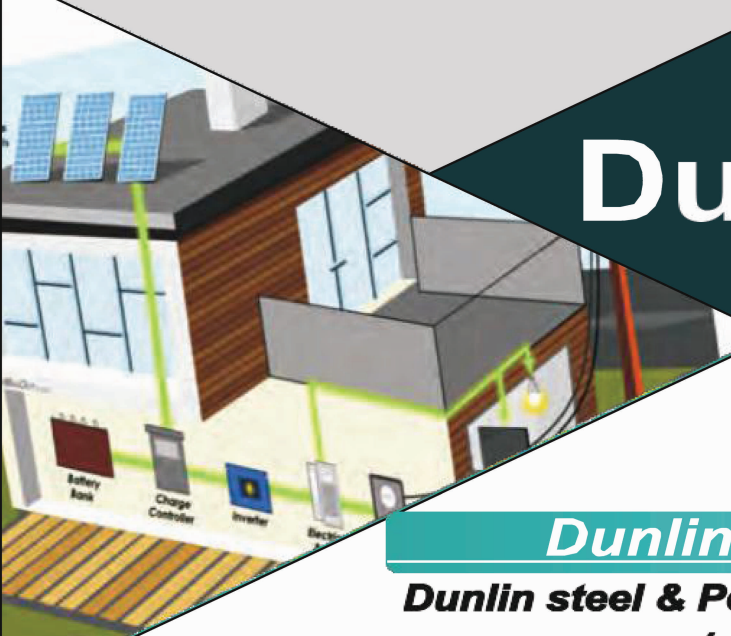




**Dunlin Steel And Power**



**Dunlin**

***Dunlin Group***

***Dunlin steel & Power Pvt.Ltd.***

***(www.dunlinsteelpower.com)***

***5 Star Apni Seva Pvt.Ltd.***

***(www.apniseva.com)***

***Dhara Trust.***

***Toll Free No : 18008906680***

## **About Us:-**

Dunlin Steel and Power private ltd was incorporated on 9<sup>th</sup> August 2018 under the companies Act, 2013(18 of 2013) and the company is limited by shares. It is scatering to Infrastructure, Services, Energy and Solar sector and it is trying to drive the market forward with innovative solutions in different sectors.

To remain competitive and meet customer's expectations, we lay great emphasis on continuous up-gradation of products, services and related technologies. Our determination is to provide quality products and reliable customer services to our customers with innovative and cost-effective method.

We are having total of 50+ team member working at different locations excluding outsourced employees.

## **MISSION & VISION**

Our vision is to be globally admired organization that enhances our products & services with our highly skilled and motivated professional team by getting support of community to serve the Industry and adding value in development of the India.

## **CORE VALUES**

- To empower employees to unleash their full potential to deliver sustainable outcomes
- Maintain integrity
- To earn affection of customers by delivering loftier experience and value
- Respect for each stakeholders associated with the company
- Delivering latest cutting edge technology to customers at an affordable price
- Ensuring highest quality of deliverables and standards.

## **MANAGEMENT TEAM**

### ***Name***

Mr. Purna Chandra Panda

### **Designation**

Chairman Cum Managing Director

### **Qualification**

MA(Pol.Sc)

MBA (General Management)

### **Experience**

23 years

### **Details**

Infrastructure sector

### ***Name***

Mr. Krutibash Panda

### **Designation**

Chief Executive Officer

### **Qualification**

B.Tech (NIT, Electrical), MBA(Finance)  
(XIMB)

### **Experience**

17 years

### **Previously worked with**

Fedco, Enzen, CESU, Alstom, ICSA

### **Details**

Infrastructure & Service Sector

### ***Name***

Mrs. Swarnanjali Pati

### **Designation**

Non-Executive Director

### **Qualification**

Post Graduates in Bioinformatics

### **Experience**

10 years

### **Details**

Infrastructure, IT Sector

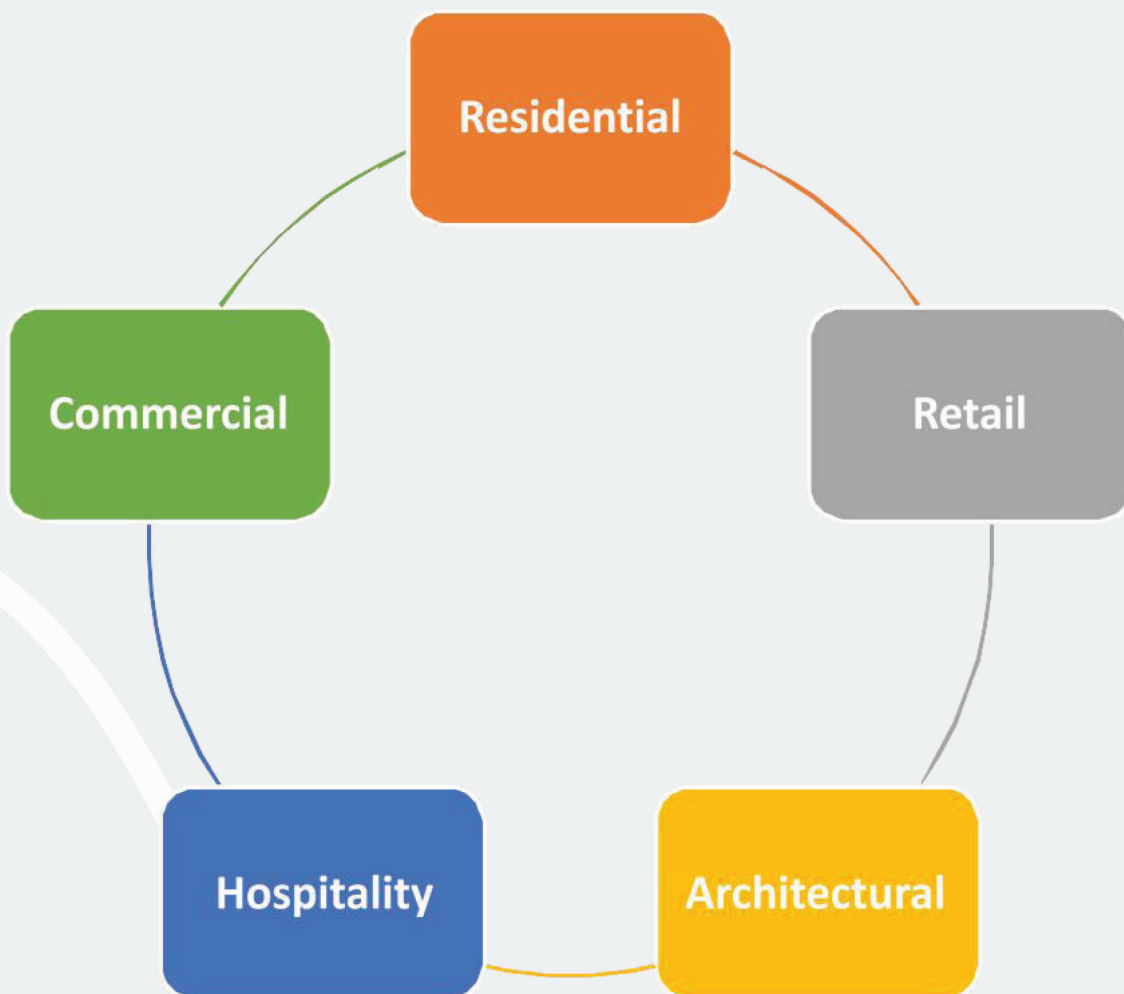


## **OUR OFFERINGS**

### **SOCIAL INFRA& REAL ESTATE**

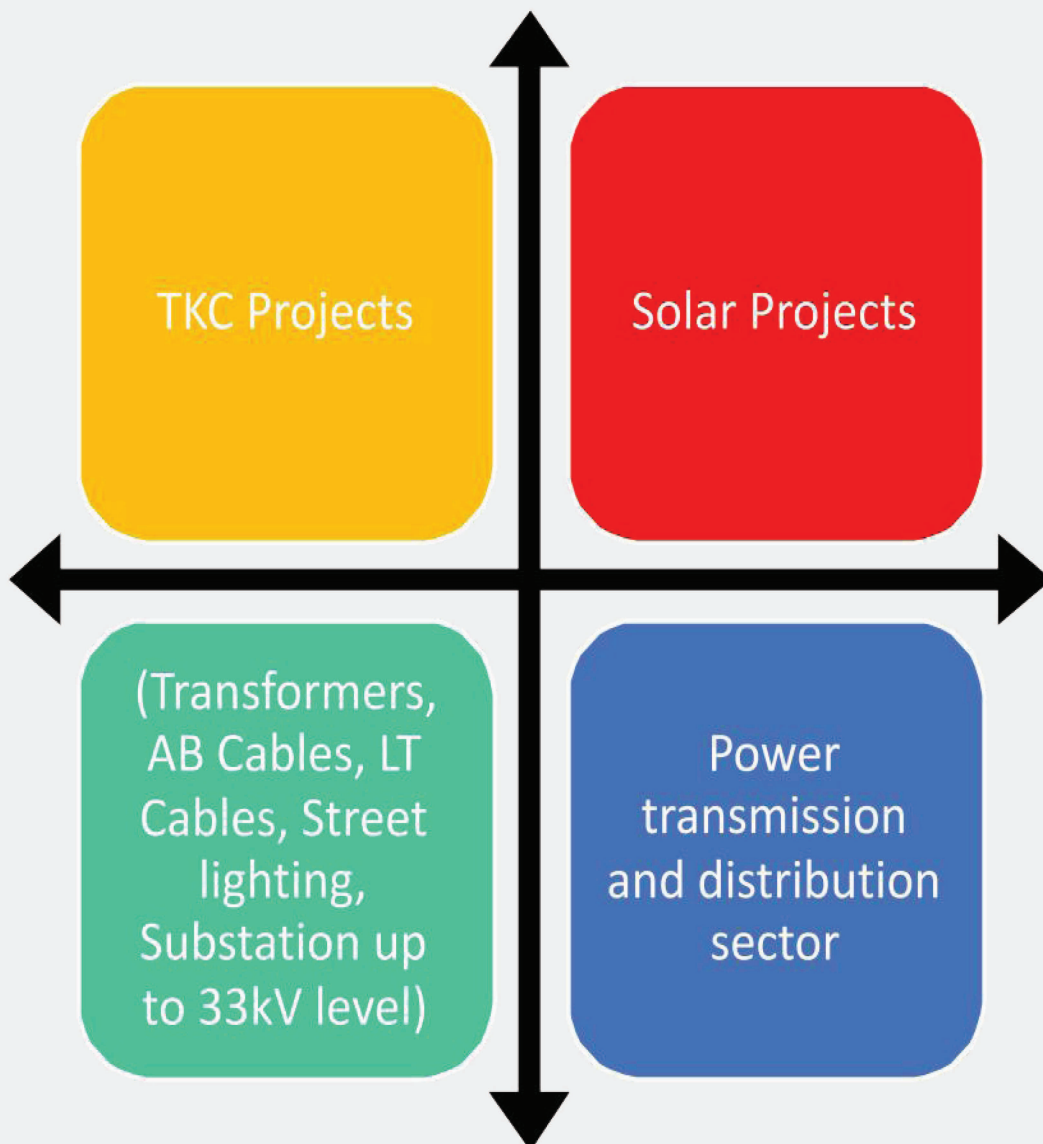
Dunlin Steel and Power's presence in real estate comprising of development and sale of residential houses, villas and apartments of varying sizes and integrated townships, with a focus on the high-end, luxury residential developments. Also focus is on certain commercial and shopping complexes, Medicals and other civil construction works including those that are integral to the residential developments they are attached to.

All the projects are designed to be elegant as well as functional and blend perfectly into the green surroundings. Dunlin has planned to expand its business in pan India level.



# ENERGY

With an objective to prove as one of the reputed Project Planning, implementing and Consulting Organization in Energy Sector and to be a member of power sector work including Installation and Commissioning of all types of Electrical Projects (Like transformers, Aerial Bunched cables, LT cables, Service wires, Insulated conductors and Substation up to 33 kV voltage level), Installation & Commissioning of Solar Power projects, Implementation of Projects, Implementation of Projects associated with Aggregated technical & Commercial loss reduction of Electricity Distribution Companies using its skilled professionals and advanced Technology.



# lorenzo

## MEGA AFFORDABLE HOUSING PROJECTS

### Reside beside paradise....

It's time to break away from that monotonous template you've been living till now. You work so hard to earn that perfect moment of living the dream of owning a home, but all you find are illusionary propositions all around. Its time now to free yourself from the shackles of living somebody else's life. Live the way yo always wanted to, with lorenzo.

DUNLIN GROUP is elated to present lorenzo. The perfect concept of affordable homes where you live in the lap of nature.

Perhaps, that should be the only way to live.... the lorenzo way.

### lorenzo....

Located in **Bhagabatipur**, neighbouring the Chandaka forest and the **Deras** and **Jhumka** reservoirs, the **lorenzo** project is perhaps the most striking possibility of a perfect home connected to nature. wait, that doesn't mean it's disconnected to the city ! The project is placed at a distance of **9 Km** from the **Baramunda** bus stand and **7 Km** from the nearest hospital- **the Sum hospital**. Now that is easy, right ? The location is bustling with various other housing projects. making it a well facilitated locality with shops, services, bus stops, etc.

The architecture involved stands for innovation in the housing scenario. The project is basically an apartment building, but heavily borrows from the row housing concept, The result, an intelligent matrix of 2 BHK units, maximises the advantages of both the apartment and row housing concepts, In other words, the project is low rise structure that is highly affordable and involves a shortened period of construction but at the same time, the space utilisation is also to the maximum.

## COMMUNICATION



**Mo Bus Stop  
At door step**



**Essar Petrol  
Pump :- 200m**



**Baramunda  
Bus  
Stand :-11km**



**Airport  
12km**



**Khorda Railway  
Station:-15km**



**Railway  
Station:-15km**

## VIEWS NEAR BY



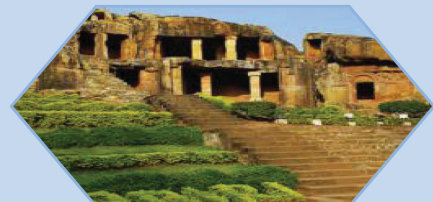
**Deras Dam :-4km**



**Jhumka Dam :-  
3.5-4 km**



**Chandaka Elephant  
Sanctuary : 5km**



**Udayagiri & Khandagiri  
10km**

## EDUCATION



**Mount litera zee  
School:- 0km**



**MITM :- 1KM**



**Ramadevi 2nd  
Campus :-2.5km**



**Vikash Residential  
School :-2.5 km**



**Biral Global  
Management -  
3km**



**IIIT :- 4km**

## HOSPITAL



**Sparsh  
Hospital:2km**



**PHC (Public  
health  
center :- 3km**



**Sum Hospital  
:-7km**



**Capital  
Hospital  
13km**

## BANK NEAR OUR PROJECT



**SBI : 2KM**



**UCO Bank  
2km**



**Gramya  
Bank:- 2km**



**Punjab  
National  
Bank 2km**

# LORENZO FLAT

## Proposed View



## Lorenzo two bedroom simplex unit

If there's any hesitation with the idea of an apartment dwelling, BIPL is glad to present an alternative - the Lorenzo 2 bedroom simple units. These residences are simplex RCC structures tht keep future expansion in mind when designed. Now, the real treat - the plans o these simplex units are completely flexible ! We have a string of options regarding the planning of these units. Get what you really want...



# DETAILS OF THE 1BHK UNIT



total built up area - 525 square feet

unit plan



sectional view

# DETAILS OF THE 2BHK UNIT



total built up area - 900 square feet

unit plan

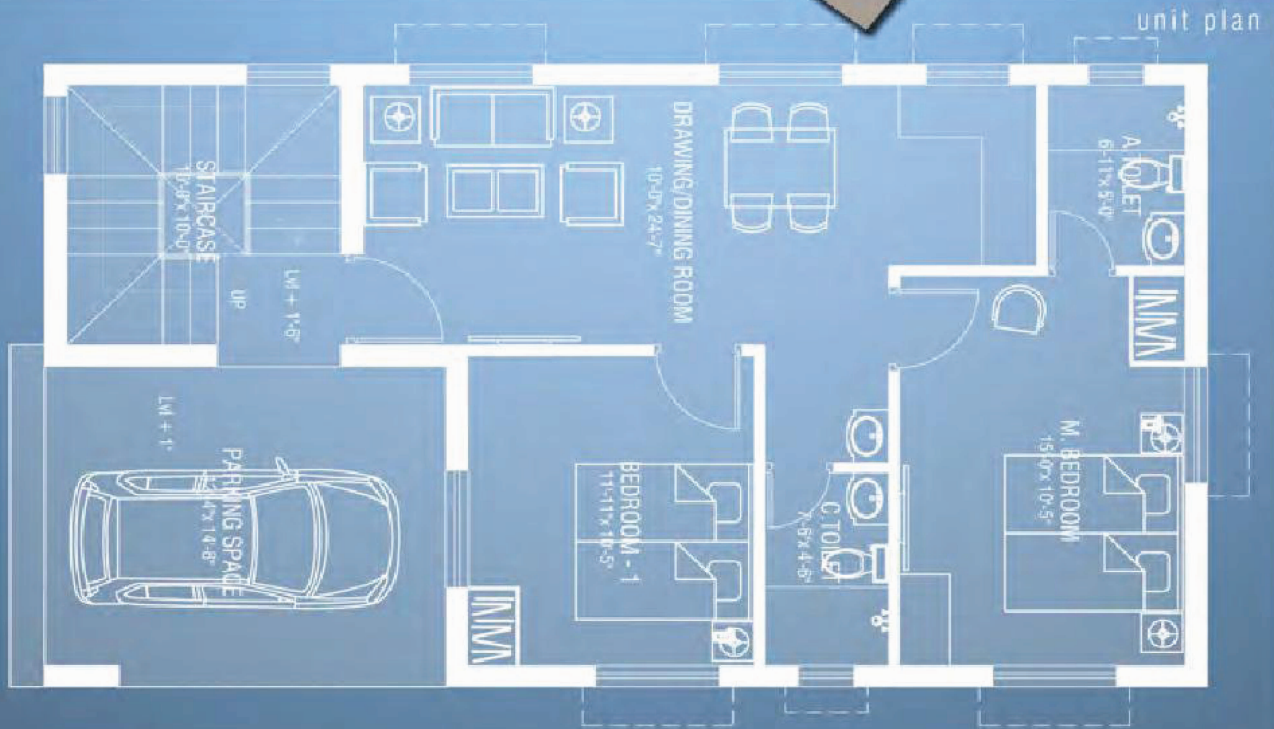
# DETAILS OF THE 2 BEDROOM SIMPLEX UNIT \*

\* this particular arrangement is optional from a string of different plans that are flexible and cut to your particular requirements



sectional view

the plot for these 2 bedroom simplex units are sized at 1500 square feet [ 50 feet x 30 feet ]



# PRESENT STATUS



**(Solar Street Light)**



**(Plots)**



**(Park work in progress)**

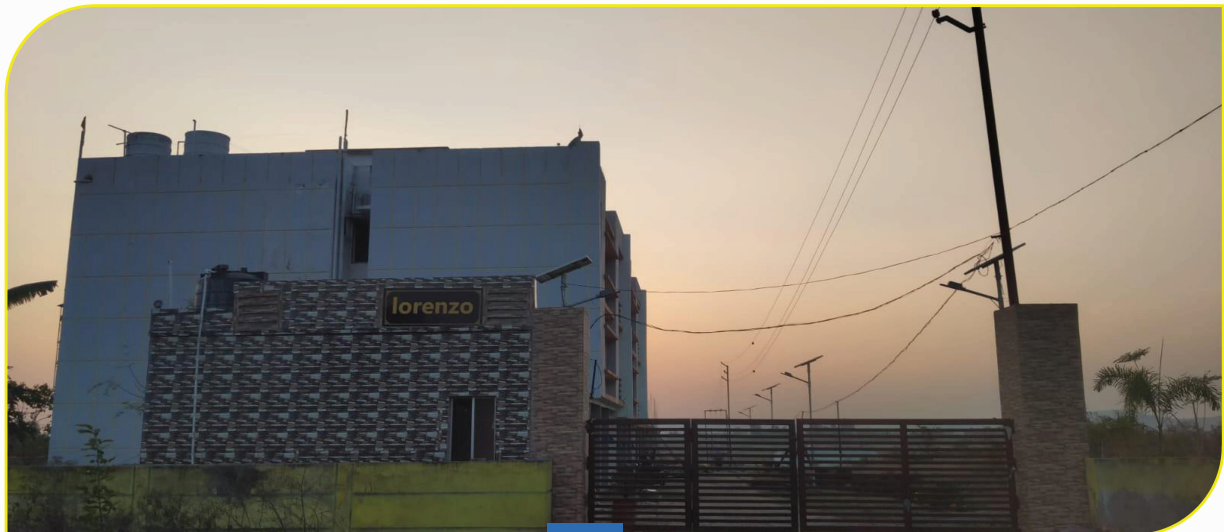
## Block-A- Building-1 completed & handed over



Front View



Security Chamber Side View



# AMENITIES



Gated community with 24/7 security system enabled by efficient security personnel



Round the clock surveillance using advanced CCTV cameras



Ample parking space for 2 wheelers and 4 wheelers as well as guest parking



Uninterrupted power supply with 24/7 power back up

# *Layout Plotting Map*



# Solar System

## Solar Power Project

- Grid - Tie.
- Off - Grid.
- Micro Grid.
- Smart Street Light solution.
- Home lighting system.
- Solar water Pumping solution.
- 



## Solar Thermal system

- Solar ETC water heater (Pressurized / Non Pressurized).
- Solar FPC water heater (Pressurized / Non Pressurized).
- Handling up to 2000 LPD single system with heat pump technology.



## Executed Solar Projects

RGGVY work at Harichandanpur Block, Anandapur Electrical Division, Nesco [Successfully completed RGGVY , IPDS, OLIC & other electrical construction work]

IPDS work at Jajpur Road, Jajpur Road Electrical Division Nesco.

[More than 100 nos electrical substation (100kvs, 63kvs, 25kvs), 50 KM HT lines, 104 KM LT lines have been completed ]

Lift Irrigation Project work at Ganjam District. [ More than 20 clusters work have been completed & balance work is going on]. [ More than 300 KW Solar System has been commissioned successfully]



## Who We Are :-

5 Star Apni Seva Pvt limited was incorporated on 13<sup>th</sup> September 2019 by team of Experts with industry experience of more than 17 years. Our focus is to provide quality and timely doorstep service to our customer at an affordable price. We are providing all types of home service e.g. Electrician, Plumber, Carpenter, Painting, Repairing of Electronics appliances etc. We are having our domain experts who are guiding the team and partners to provide best services to our customers. Bookings can be done by logging into website or by downloading our app from playstore & logging into it or through offline, call on numbers given on contacts.

Recently we have launched our new service “HER GLOW” Home Salon For Women. With our young, well trained and Energetic beautician, we are providing best possible services to women at Home.

We are working in two cities i.e. Bhubaneswar and Puri . In next 3 years, we will be scattering to all key cities across Odisha. Then we will move to out of Odisha.

## *Mission & Vision*

To provide quality & timely service to our customers at an affordable price

## **CORE VALUES**

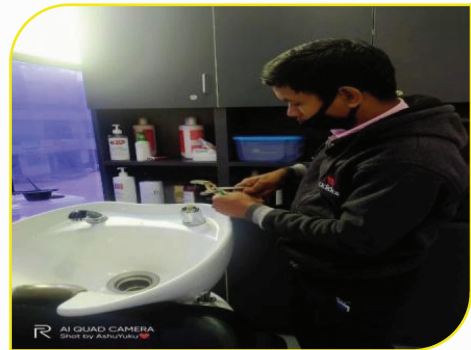
- Ensuring highest quality of deliverables and standards
- To earn affection of customers by delivering loftier experience and value
- Delivering quality and timely service to our customers at an affordable price.
- Empower employees to unleash their full potential to deliver sustainable outcomes
- Maintain Integrity
- Respect for each Stakeholders associated with the company



**(Hair Spa)**



**(Carpenter Work)**



**(Plumbing Work)**



**(Plumbing work)**



**(Waxing)**



**(Electrical Work)**



**(Plumbing Work)**



**(Water tank  
Repairing Work)**



**(Hair Spa)**

## GROUP PICTURE





REWARDS & RECOGNITION TO EMPLOYEES



FOUNDATION DAY CELEBRATION





# lorenzo



*Plot No-316, 2nd Floor,  
District Center ,  
Chandrasekharpur,  
Bhubaneswar-16.  
Contact No:-0674-2747099  
Mob:-9937847725 /  
8039530104*

e-mail:-[marketingteam@dunlinsteelpower.com](mailto:marketingteam@dunlinsteelpower.com)  
[info@dunlinsteelpower.com](mailto:info@dunlinsteelpower.com)